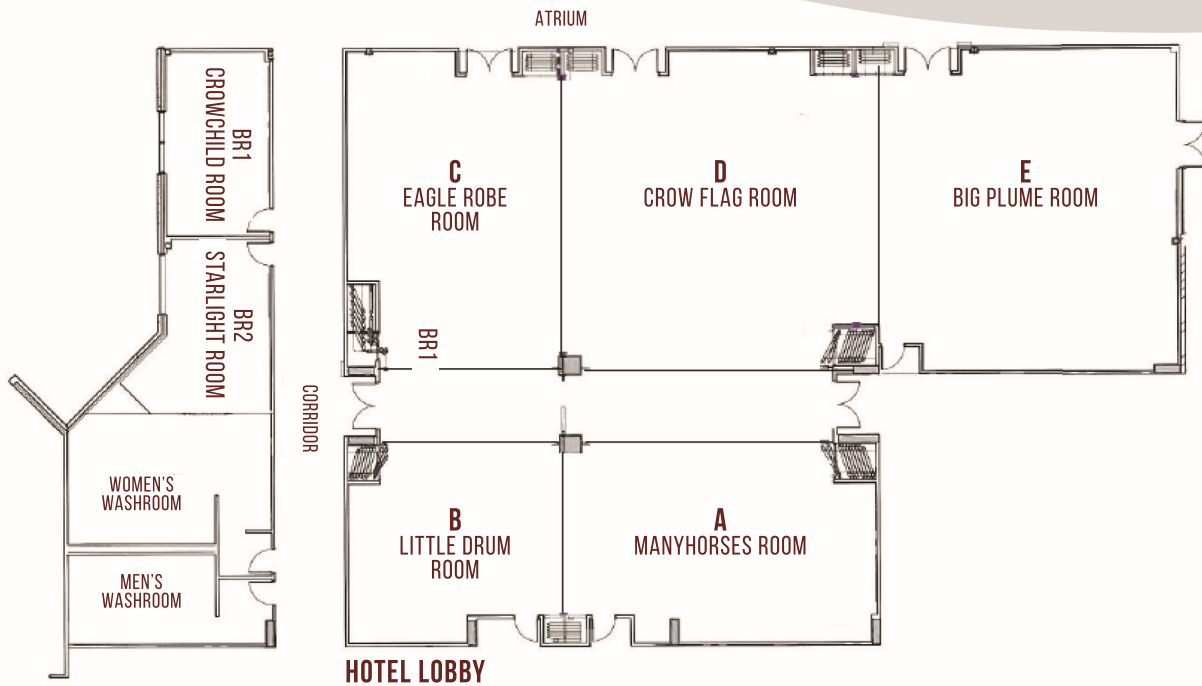


FUNCTION SPACE FLOOR PLAN AND CAPACITY



ROOM NAME	HEIGHT	SIZE LxW	FT ²	THEATRE / RECEPTION	CLASSROOM	U-SHAPE	BOARDROOM	BANQUET ROUNDS OF 8	CRESCENT ROUNDS OF 6	HOLLOW SQUARE
Atrium	--	--	N/A	Flow	N/A	N/A	N/A	N/A	N/A	N/A
Tsuut'ina Ballroom	--	--	5,940	500	170	N/A	N/A	320	186	N/A
A (Manyhorses)	12'	26 x 38	988	70	40	35	30	48	36	40
B (Little Drum)	12'	26 x 25	663	50	27	16	16	24	18	18
C (Eagle Robe)	12'	40 x 27	1,078	90	36	32	18	40	30	24
D (Crow Flag)	12'	40 x 38	1,515	150	40	36	24	72	54	48
E (Big Plume)	12'	40 x 42	1,695	150	40	36	24	80	60	48
AB	12'	26 x 63	1,651	150	80	N/A	50	72	54	N/A
CDE	12'	40 x 107	4,290	416	116	N/A	N/A	224	168	N/A
BR 1 (Crowchild)	12'	24 x 13	329	Permanent Boardroom for Maximum 12 Attendees, 78" Monitor						
BR 2 (Starlight)	12'	22 x 13	346	Permanent Boardroom for Maximum 12 Attendees, 78" Monitor						
EVENT CENTRE	23'	208 x 112	20,000	2,600	800	N/A	N/A	1,000	840	N/A
EVENT PRE-FUNCTION	23'	30 x 200	6,000	1,000	N/A	N/A	N/A	N/A	N/A	N/A